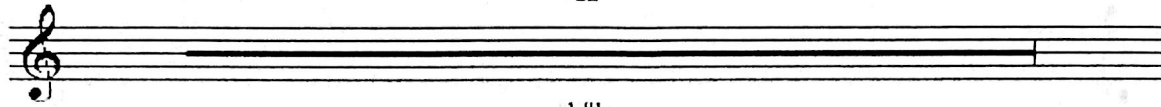


6

TOOT SWEETS

Potts, Jeremy,  
Jemima, Truly,  
Ensemble

41



1-81

LORD SCRUMPTIOUS: Truly! (sees Potts) You.  
POTTS: Yes! Er...

42 Safety

POTTS:

Don't waste your puck er on some all day suck er, and don't try a tof fee or

46

creme. If you seek per fee tion in su gar con fee tier, well, there's some thing new on the

50

scene. A mouth ful of cheer, a sweet with out peer, a mu si cal mor sel su

54 Bright waltz (in 1)

preme!

58

Toot sweets! Toot sweets! The can dies you whis tie, the whis ties you eat.

66

Toot sweets! Toot sweets! The eat a ble, tweet a ble treat!

(whistle)

74 TRULY:

Toot sweets! Toot sweets! The toot of a flute with the fla vor of fruit.

82

Toot sweets! Toot sweets! No long er need can dy be mute! This

POTTS:

90 TRULY:

grand in - no - va - tion in can - dy cre - a - tion will cause a sen - sa - tion, I know. The

98 + POTTS

kid - dies will crave for and eag - er - ly rave for a whis - tle to sa - vor and

104 POTTS: BOTH:

blow. That mouth - ful of cheer! That

TRULY:

That sweet with - out peer!

110

mu - si - cal mer - sel su - preme!

114

Toot sweets! Toot sweets! A bon - bon to blow on at last has been found.

122 LORD SCRUMPTIOUS: No! Take it away.

Toot sweets! Toot sweets! with eat - a - ble, tweet a ble...

15

130-144

145 Dictated Galop POTTS:

*(Lord Scrumptious blows on Toot)* *(he blows again, then laughs)* POTTS: He likes it! Their

151 JEREMY & JEMIMA:

val - ue's in trin - sic. TRULY: Or marsh - mal low mouth - ful you munch!

Sur - pass an y mint - stuck!

158 POTTS: JEREMY & JEMIMA:  
 Though lic 'rice is chew y and choc 'late is charm-ing to  
 TRULY:  
 and gum drops are goo ey

165 POTTS & MEN: TRULY & WOMEN: ENSEMBLE:  
 crunch. That su-ga-ry life. That sweet of your life it's clear ly the best of the

173  
 bunch!

177 ALL:  
 Toot sweets! Toot sweets!

14

183-196

197 ENSEMBLE:  
 Toot sweets! Toot sweets!

46

201-246

247 POTTS:  
 That